

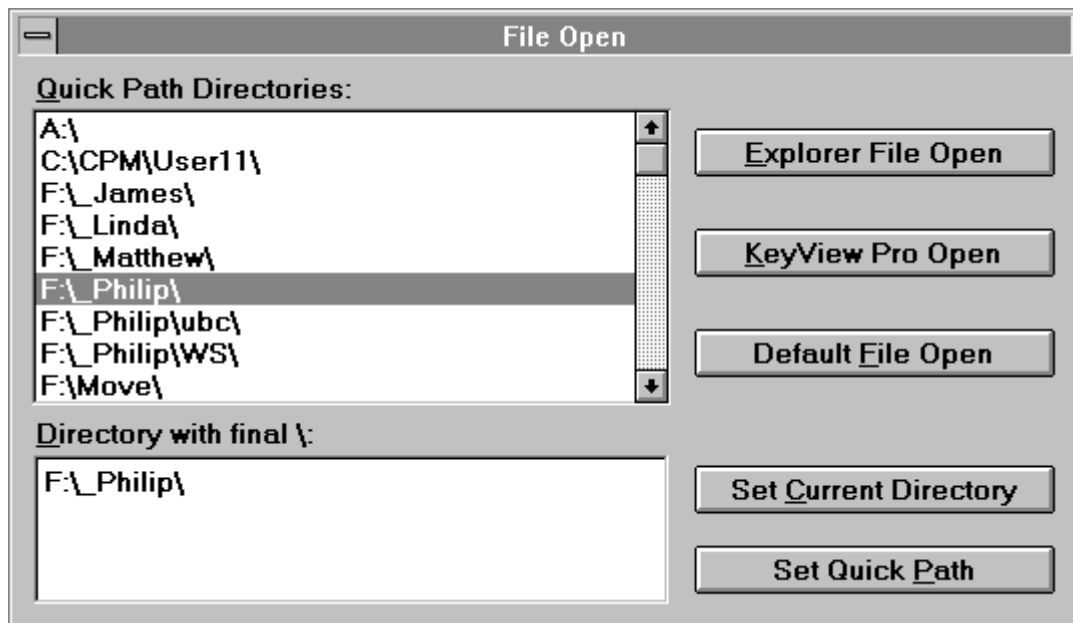
Nu Save As Macro 6.0

November 2001
Philip Griffin-Allwood
pgaga@auracom.com

I have reworked the SaveAs macros, giving them a new interface. Previous versions have used a Sub Folder to provide the directory menu. The new versions use array statements in ListBoxes and DropBoxes. The previous macros go from button menu to button menu. In the new versions, the number of menus has been reduced and they are integrated. Instructions for installing/customizing the macro for a users system are contained within each macro.

=====
Open 5.0
=====

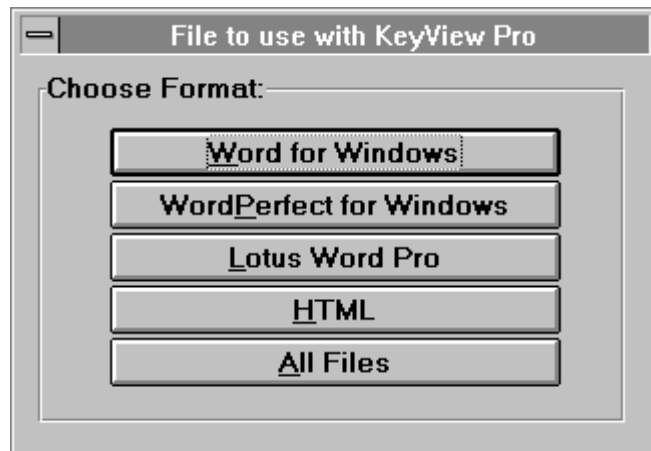
The Open 5.0 macro (Open5.wmc) integrates two macros, the KeyView Pro FileOpen and the FileOpen with Explorer (Windows Explorer under Win9x and Calmira II's Explorer for Win3x (<http://www.calmira.org>)).



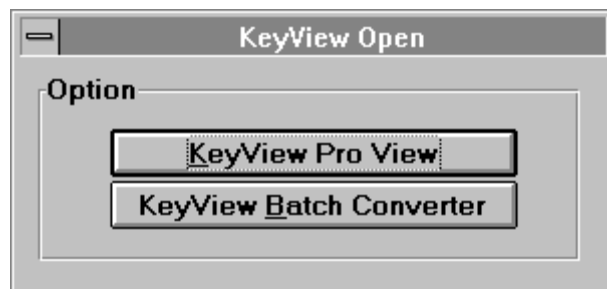
The Open5 menu has an array list which is customized for the user's Quick Paths. There is also a TextBox so a directory not in the Quick Path list can be entered. Buttons let the user set the directory to the Quick Path or to the Current Directory of WSWin.

After the directory is selected the user has three options. The default WSWin File Open dialogue can be invoked; the selected directory can be opened in Explorer; or KeyView Pro can be used to view, then open a file in WSWin.

The KeyView Pro (<http://www.keyview.com>) routine allows the user to view files which WSWin cannot normally open (such as Word97).



The user views the file and converts it to RTF (or uses the KeyView Pro Batch Converter to convert the file to RTF). N.B. the directory for saving the RTF using KeyView Pro needs to be set to the same one as defined for the RTFPath\$ variable in the macro.



WSWin pauses to allow the conversion to RTF using KeyView Pro, then gives the user the option to use FileOpen to open the RTF file. There are two other options, Both to convert the RTF file to WSWin with the same name as the original file.



The macros assume the user has updated the Microsoft RTF filter. Because of bugs in the updated w4w19f.dll (versions 6x and 7x from 1995 and 1996), I have written the routines so the 1994 w4w19f.dll (the one which comes with WSWin) can be used with the name aw4w19f.dll. If the RTF filter has not been updated, a comment (') in front of the line

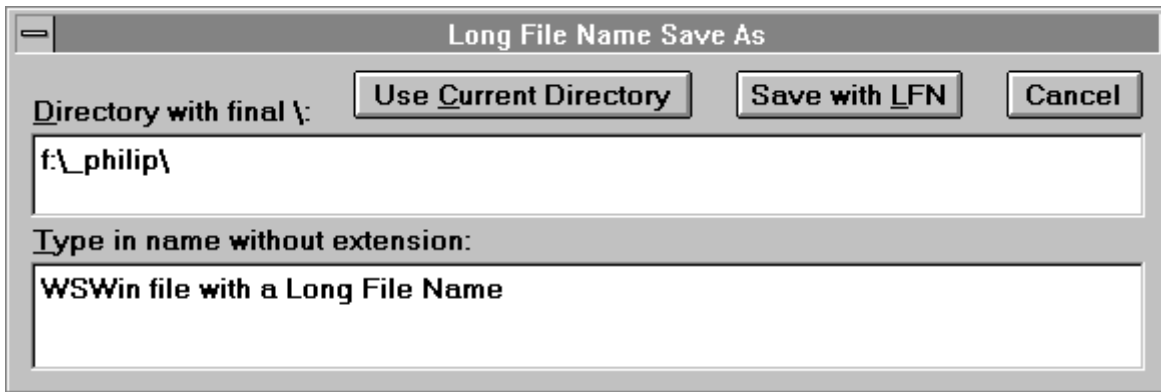
```
PUSHBUTTON 20, 73, 90, 12, "Old Convert &RTF File", 5
```

will eliminate the option.

Instructions are within the macro for defining the array lists and for customizing Win9x and Win3x operating systems.

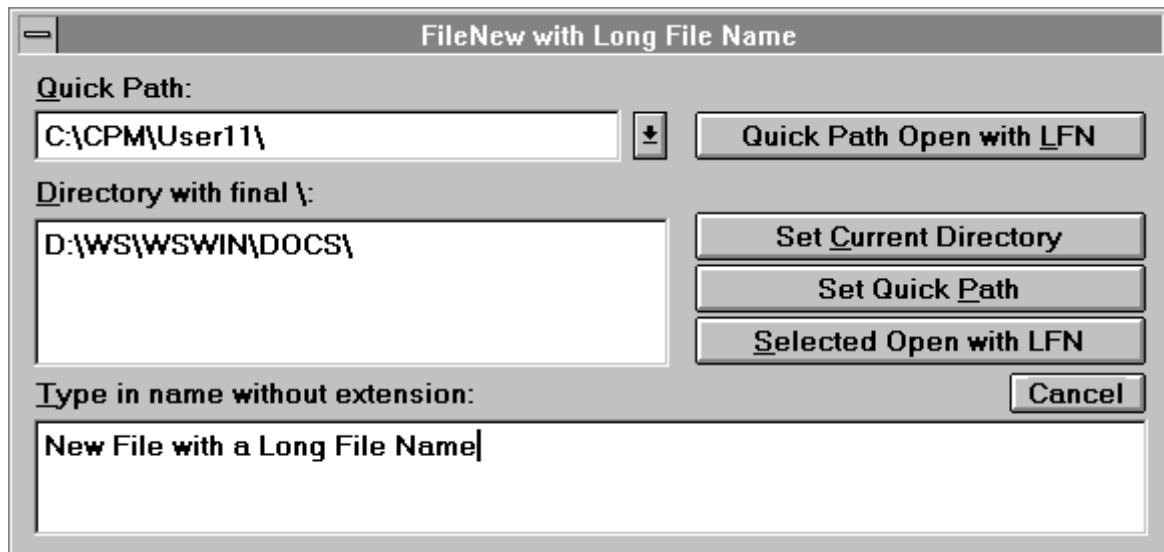
=====
LFNSave 6.0
=====

LFNSave 6.0 (LFNSave6.wmc) is the single menu simplified version of the NuSaveAs macro. The menu has two TextBoxes, one for the directory (the user can define a default WSWin directory so it appears as the initial entry in the directory TextBox) and one for the Long File Name. A button gives the option to set the directory to the current one being used by WSWin. Once the directory and file name are defined, the user pushes the "Save with LFN" to save the file.



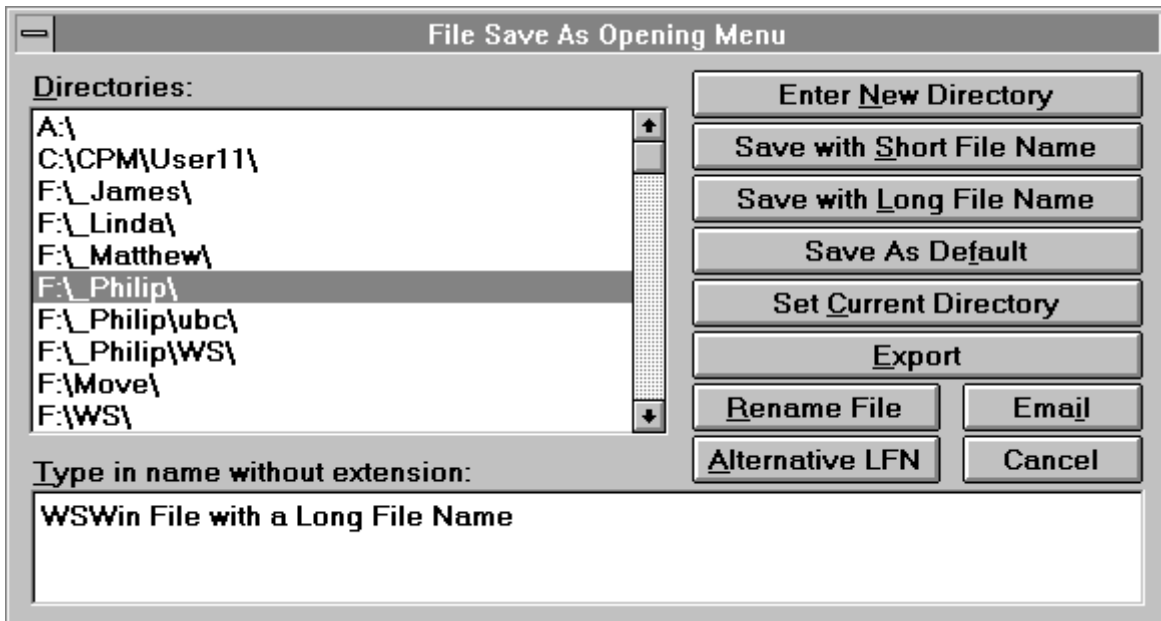
=====
LFNNew 2.0
=====

LFNNew 2.0 is a single menu to permit the user to open a new file with a LFN name. The directory can be selected by using a user defined array list in a DropBox or by entering one in a TextBox. Buttons let the user select the QuickPath or current WSWin directory. A TextBox lets the user define the LFN. Depending on how the directory is defined the user pushes a button to open a new file with a LFN. The 8.3 FAT Alias appears in the WSWin dialogues.



=====
NuSaveAs 6.0
=====

NuSaveAs 6.0 (NuSaveAs.wmc) is a complete reworking of the SaveAs 5.2 macro with a new interface and new features. Hopefully the new version is easier for users to customize. Instructions for customization are contained within the macro.



The "Opening Menu" displays a ListBox of Quick Paths. This is produced by a collection of arr\$ statements which need to be customized to conform to the users Quick Path list as found in WSW.INI. Additional paths can be added.

The "Opening Menu" has a TextBox into which the name of the file is to be entered.

The first button gives the option to go to the "New Directory" menu (see below).

The second and third buttons cause the file to be saved with either a short name or a long file name depending on what is entered in the TextBox (short for eight letters or less with no spaces; long for the rest).

The "SaveAs Default" button takes one to the original WSWin SaveAs dialogue.

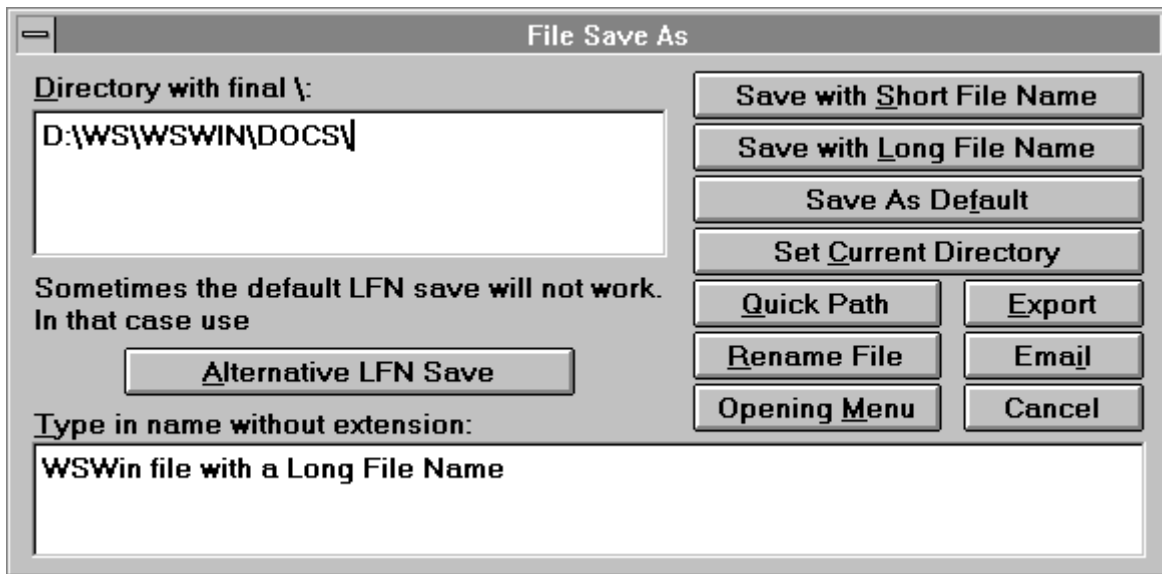
The "Set Current Directory" gets the directory information from the system and sets WSWin to use it, then takes the user to the "New Directory" menu (see below), where the directory information is placed in the "Directory" TextBox. This enables the user to quickly save a file to a directory not in the Quick Path list.

The "Export" button takes the user to the "Export" menu (see below).

The "Rename File" uses function calls from the WSWin Setup program to enable renaming of an unopen file.

The "Email" button saves the open file as a text file in a designated directory for easy inclusion in an email.

The "Alternative LFN" button takes the user to the "New Directory" menu (see below).

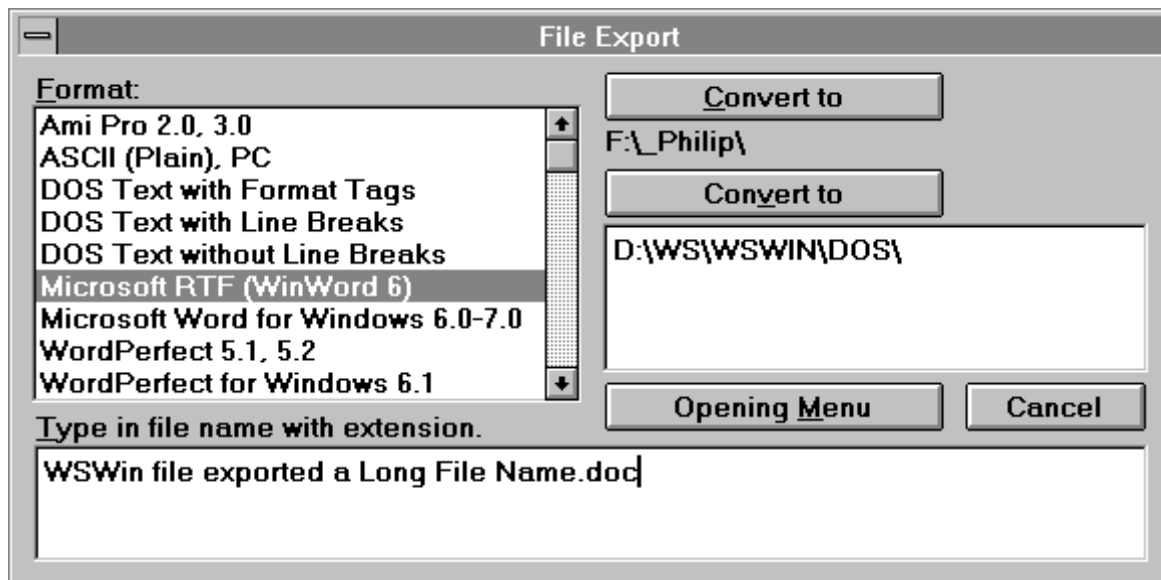


The "New Directory" menu resembles the "Opening Menu", but the "Quick Path" list is replaced by a TextBox in which a directory can be added. The "Set Current Directory" button has been replaced by an "Opening Menu" button to take the user back to the opening menu.

The "Short" and "Long File Name" Save buttons, the "SaveAs Default" button, "Set Current Directory" button, the "Export" button, the "Rename File", and the "Email" button work as they do in the "Opening Menu".

A "Quick Path" button gets the directory selected in the "Opening Menu" and puts it in the "Directory" TextBox.

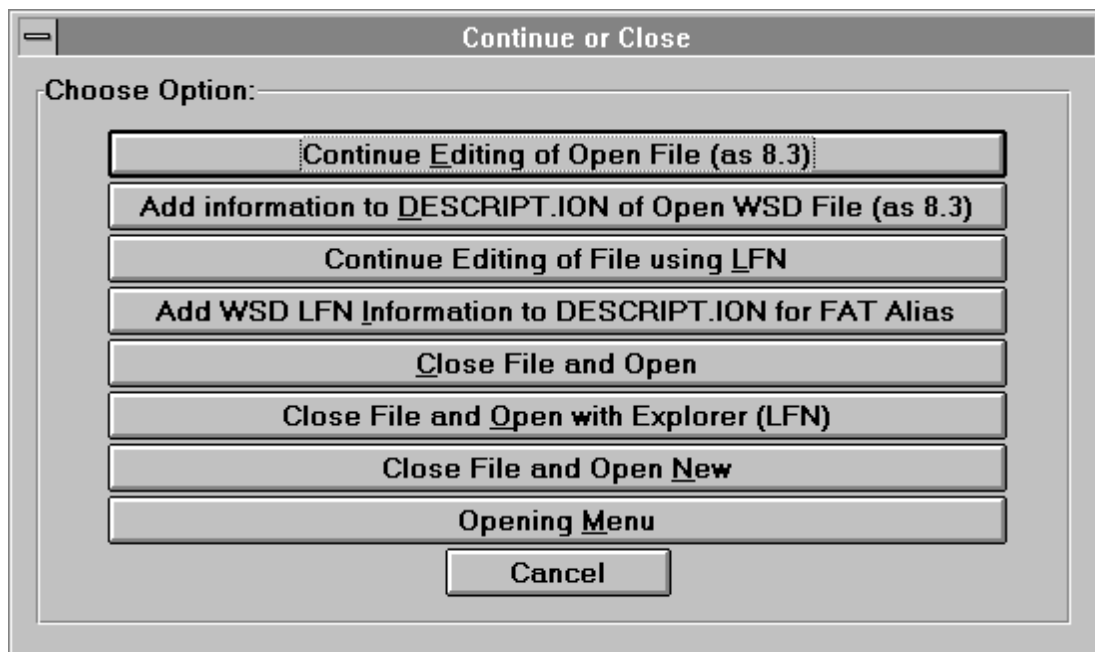
The "Alternative LFN Save" button runs macro routine which uses a DOS box and needs LFNRen.pif in the macro directory. The Default LFN routine sometimes fails when dealing with certain frames.



The "Export" menu has a ListBox created using a arr\$ list built from WSWFlt.INI. The distributed list is based on my WSWFlt.inf update. The user selects the format for conversion, then types in file name with extension on a text box. The file name can be short or long.

The macro has two "Convert to" buttons. The first shows the selected Quick Path directory and will export the file to the Quick Path directory selected in the "Opening Menu". The second "Convert to" button is a directory defined in a TextBox. If a directory is defined in the "New Directory" menu, that directory will appear in the box.

An "Opening Menu" button will take the user back to the "Opening" menu.



The "Continue or Close" menu remains as is from SaveAs 5.2, except an option has been added to return to the "Opening Menu".

"Continue Editing of Open File (as 8.3)" will continue editing of the file just saved with a Long File Name. "Add to DESCRIPT.ION of Open WSD File (as 8.3)" will add information to the DESCRIPT.ION files for Win3x programs such as Calmira. II.

"Continue Editing of File using LFN" will close the file saved with the Long File Name and then open the file using the FAT Alias. Sometimes an error will occur during this process and one has to tell WSWin to Ignore it. The internal settings for the macro have the options for the 6~1.3 or 8.3 alias.

"Add WSD LFN Information to DESCRIPT.ION for FAT Alias" will add the Long File Name to the DESCRIPT.ION file. This is useful for floppy disk transfer between Win9x and Win3x systems.

"Close File and Open" closes the open file and starts the WSWin File Open Dialogue. "Close File and Open with Explorer" closes the file and starts Explorer in the selected directory. "Close File and Open New File" closes the open file and opens a new file.